

TYPICAL DETAIL FOR
CONCRETE COMBINED CURB AND GUTTER

BACKFILL MATERIAL (FLOWABLE FILL)
DETAIL AT SLOTTED DRAINS

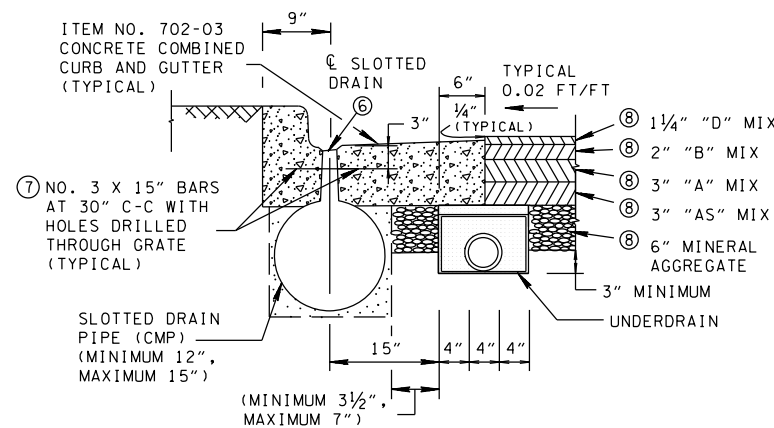
ESTIMATED QUANTITIES BACKFILL MATERIAL (FLOWABLE FILL) ③④		
DIAMETER CMP	TOTAL VOLUME PER LINEAR FOOT (CUBIC YARD)	TOTAL VOLUME PER CLEANOUT PLUG OR TEE (CUBIC YARD)
12"	0.046	0.574
15"	0.057	0.648
18"	0.078	0.773
⑤ 24"	0.084	0.759

ITEM NO. 204-08.01 BACKFILL MATERIAL
(FLOWABLE FILL) CUBIC METER

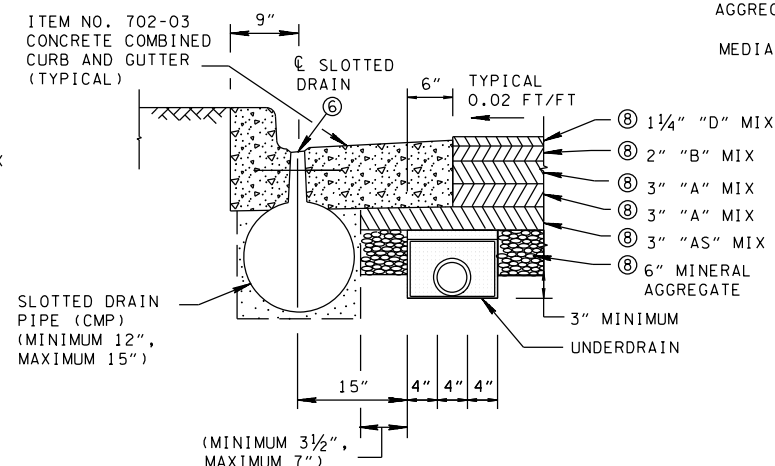
NOTE:

CONCRETE COMBINED CURB AND GUTTER TO BE PAID FOR UNDER ITEM NO. 702-03 CONCRETE COMBINED CURB AND GUTTER (LINEAR FOOT). PRICE PER LINEAR FOOT SHALL INCLUDE CURB AND GUTTER, TIE BARS, AND ALL OTHER ITEMS FOR TYING THE CURB AND GUTTER TO THE SLOTTED DRAIN.

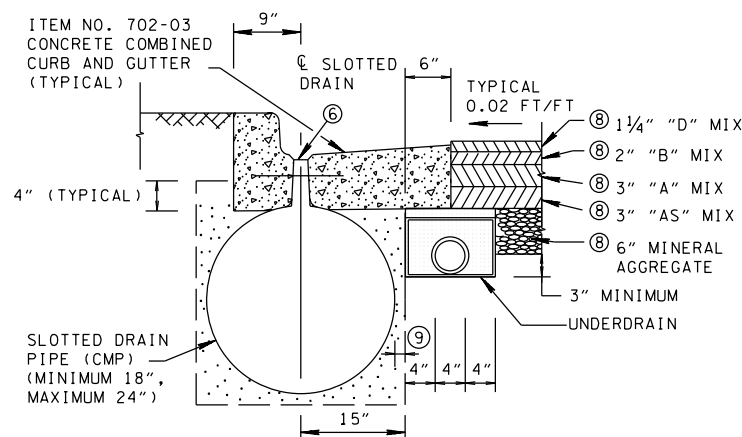
EXPANSION JOINTS SHALL BE PROVIDED AT 20' INTERVALS IN ACCORDANCE WITH SECTION 702.06 UNLESS OTHERWISE DIRECTED BY THE ENGINEER.



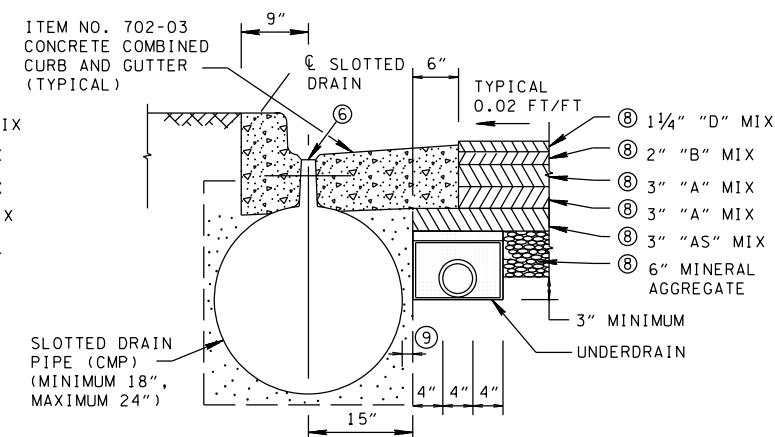
ROADWAY USE
FOR SLOTTED DRAINS
IN THIN PAVEMENT SECTIONS WITH
MINIMUM 12" DIAMETER SLOTTED DRAIN PIPE



ROADWAY USE
FOR SLOTTED DRAINS
IN THICK PAVEMENT SECTIONS WITH
MINIMUM 12" DIAMETER SLOTTED DRAIN PIPE

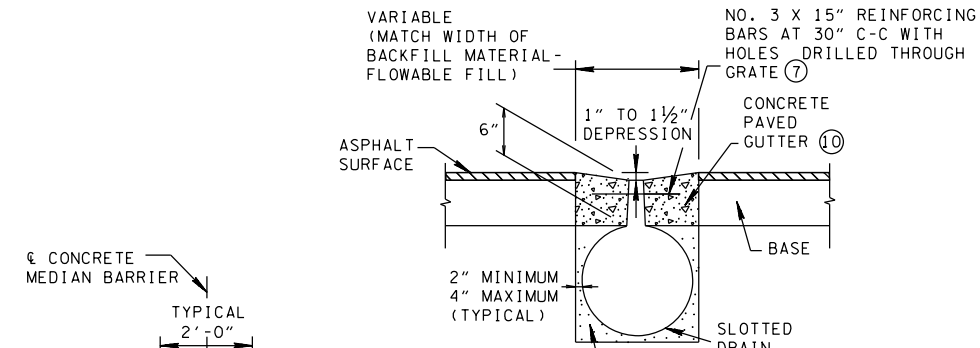


ROADWAY USE
FOR SLOTTED DRAINS
IN THIN PAVEMENT SECTIONS WITH
MAXIMUM 24" DIAMETER SLOTTED DRAIN PIPE

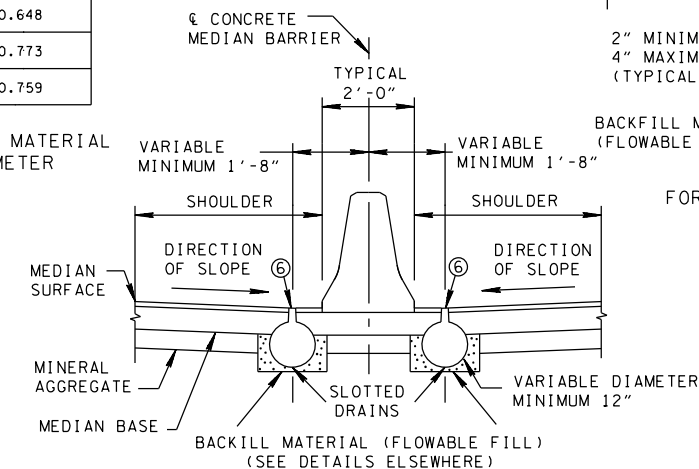


ROADWAY USE
FOR SLOTTED DRAINS
IN THICK PAVEMENT SECTIONS WITH
MAXIMUM 24" DIAMETER SLOTTED DRAIN PIPE

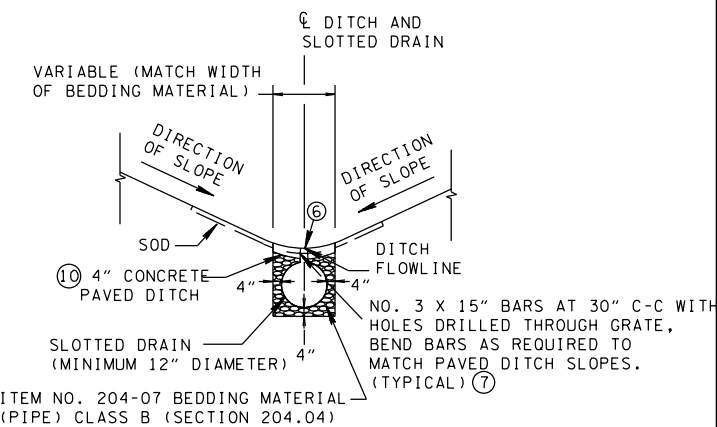
* TO BE PAID FOR UNDER
ITEM NO. 607-37.01
THROUGH ITEM NO.
607-37.05



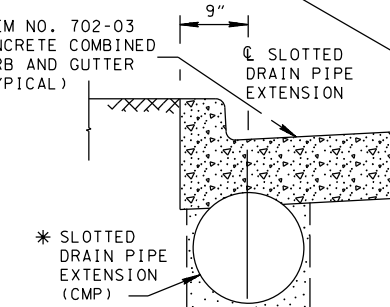
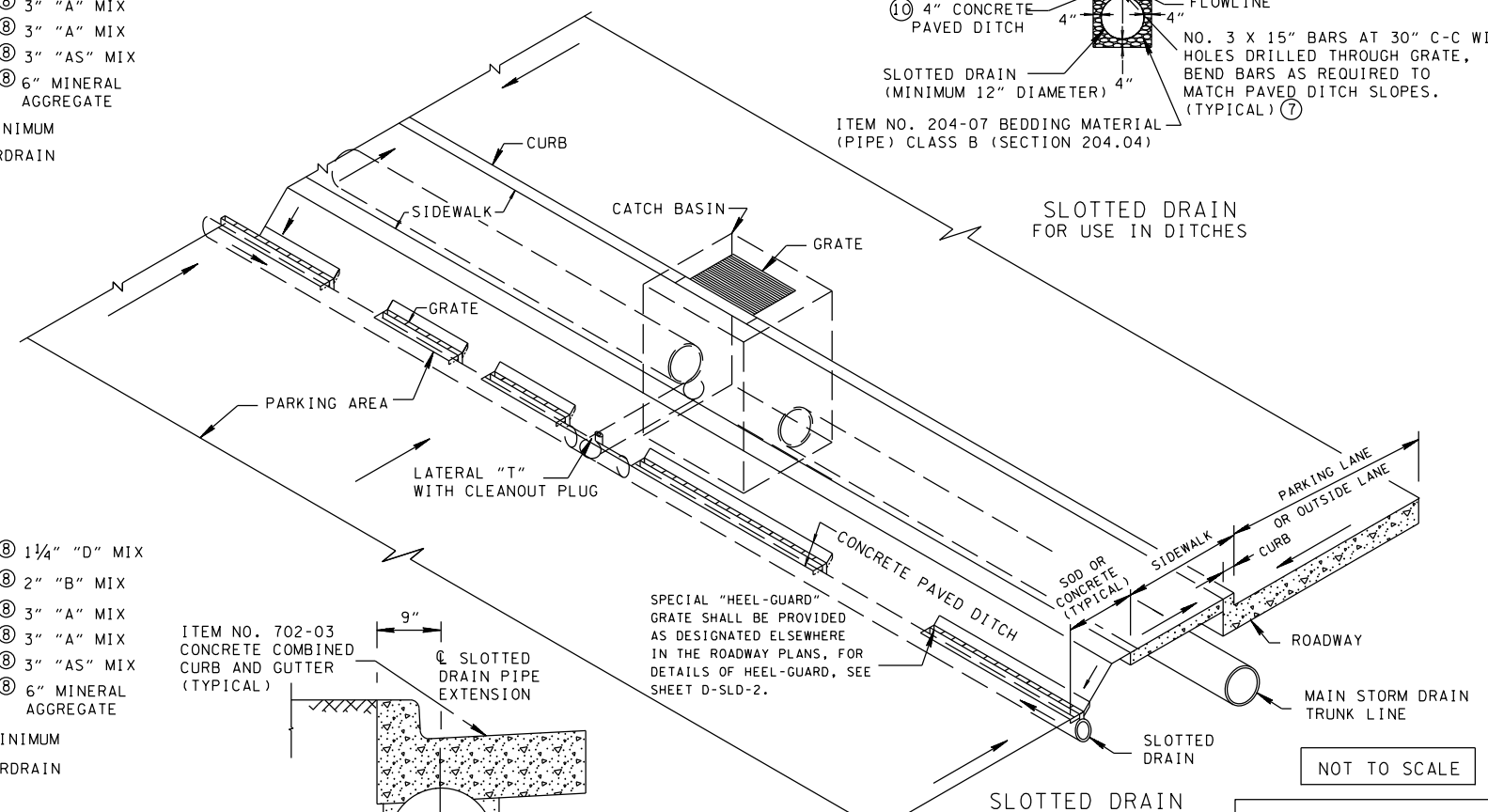
SLOTTED DRAIN
FOR USE IN PARKING AREAS
AND DRIVEWAYS



SLOTTED DRAINS
FOR USE IN MEDIANS



SLOTTED DRAIN
FOR USE IN DITCHES



NOTE:
SEE SHEET D-SLD-2 AND
D-SLD-3 FOR ADDITIONAL
DETAILS

MINOR REVISION -- FHWA
APPROVAL NOT REQUIRED.

STATE OF TENNESSEE
DEPARTMENT OF TRANSPORTATION

SLOTTED DRAINS

1-28-92 D-SLD-1